



Site-Safe Products of Florida, LLC is a one-of-a-kind "Certified Trinity TRACC™ Family Crash Cushion Repair Center" specializing in turn-key maintenance, repairs, sales, and installations throughout the state of Florida.

SITESAFE
CHANGING TOMORROW TODAY!

Re-pair: to restore (something damaged or broken)
to good condition or working order

Site-Safe strategies should:

- increase repair efficiency
- increase repair correctness
- lower repair cost
- lower repair liability



SITESAFE
CHANGING TOMORROW TODAY!

Important JUDGEMENT CALL

SEND

- Someone with past experience
- Read the manual
- Familiar with the inventory
- Provide them with a potential damaged parts list
- Good Judgment Skills
- Have them take pictures



IF UNCERTAIN CONTACT

SITE SAFE PRODUCTS OF FLORIDA

Phone: 407.321.3024

Fax : 407.321.3026



Site Safe Products houses a full inventory of Trinity TRACC Family and Trinity MPS350 Truck Mounted Attenuator Parts!

Site Safe Products Specialized in quick response delivery...

SITESAFE
CHANGING TOMORROW TODAY!

T rinity
R edirective
A ttenuating
C rash
C ushman



SITESAFE
CHANGING TOMORROW TODAY!

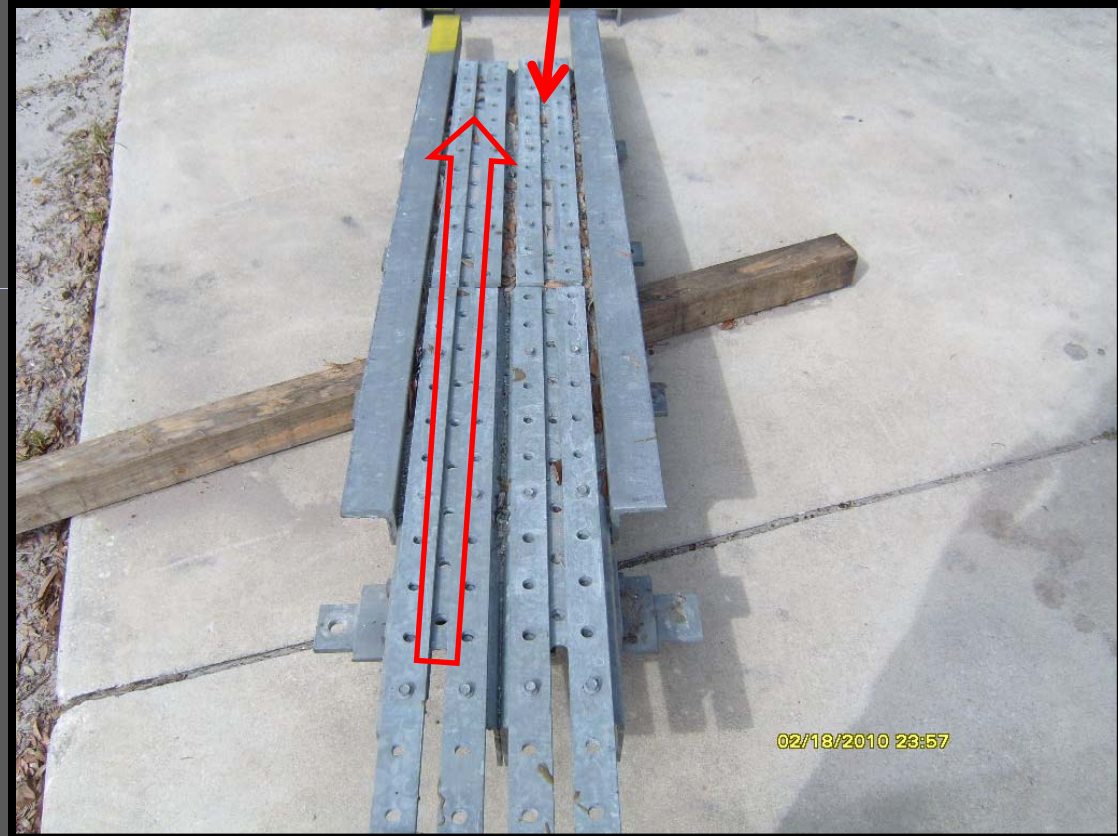
BASIC *TRACC* COMPONENTS INCLUDE

- NOSEPIECE
- SLED
- FRAMES
- FENDER PANELS

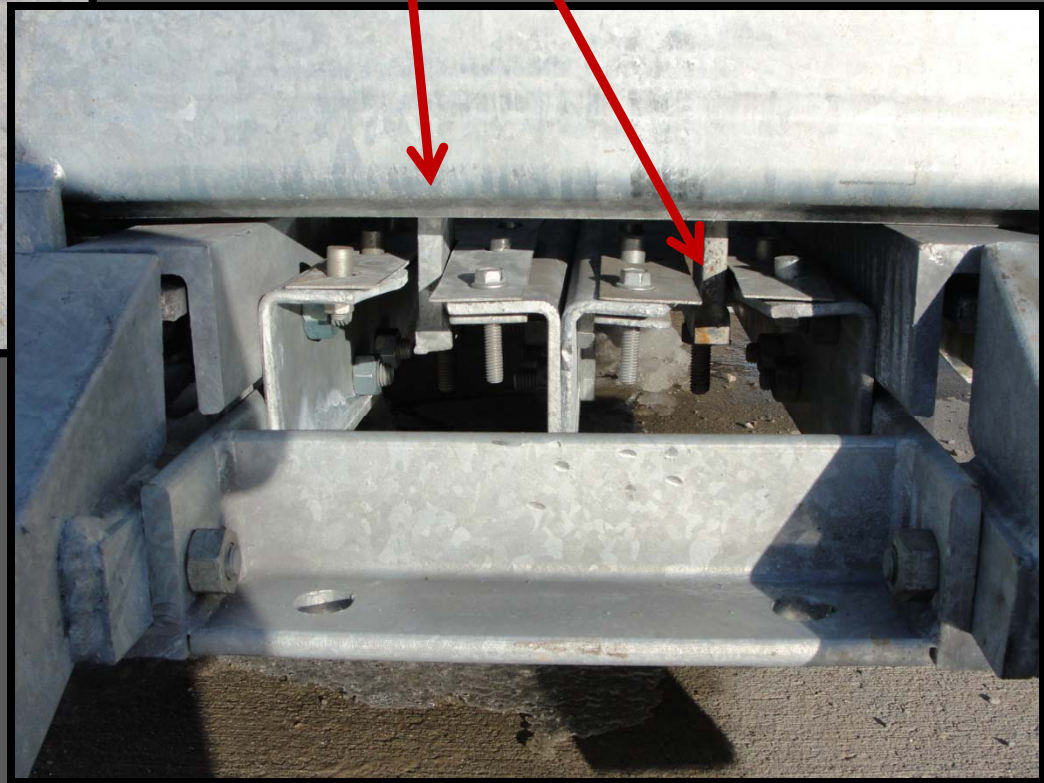


TRACC IS DESIGNED AROUND RIP PLATE TECHNOLOGY

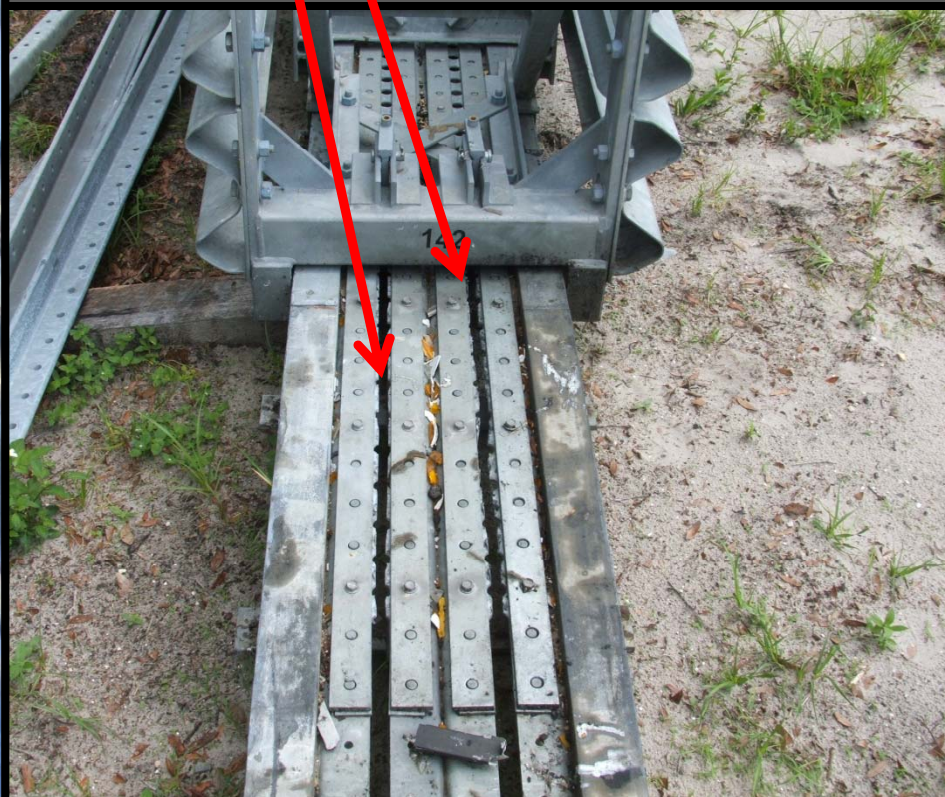
- OVERHEAD VIEW OF BASE W/ RIP PLATES INSTALLED
- TL-2 UNIT=2ea BASE ASSEMBLIES
- TL-3 UNIT=3ea BASE ASSEMBLIES
- TL-3+ UNIT=4ea BASE ASSEMBLIES



TRACC SLED IS EQUIPED WITH CUTTER BARS



AS *TRACC* SLED SLIDES; CUTTER BARS SLICE THRU RIP PLATES



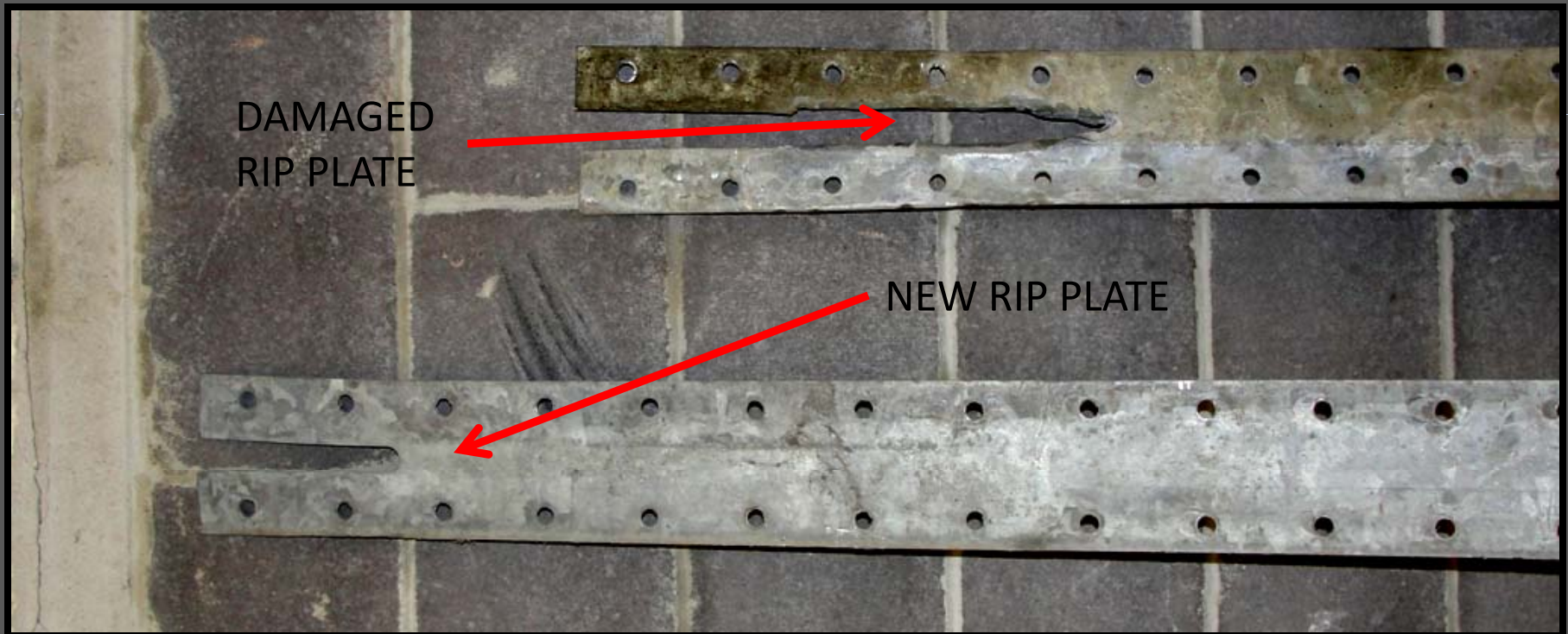
TRACC Repair

- PROPER MOT
- THOROUGH UNIT INSPECTION IS CRUCIAL, INSPECT FOR CRACKED WELDS, BENT PARTS, BROKEN PARTS



TRACC Repair

- DESIGN IMPACTS ONLY REQUIRE YOU INSTALL NEW RIP PLATES
- DAMAGE SHOULD NOT EXCEED VEHICLE STOPPING POINT.
- 05 TRACC USES ONLY 12 BOLTS PER RIP PLATE



TRACC Repair

- NUISANCE IMPACTS (Less than 4 ½ feet) ONLY REQUIRE YOU PULL SLED TO FRONT OF UNIT
- INSPECT UNIT ANCHOR RODS



INSTALL, Proper installation is crucial for minimizing damage to your attenuator.

Common Install Pitfalls

- Shallow drilling
- Failure to drill all holes
- Failure to aerate holes
- Insufficient epoxy/ wrong epoxy
- Checklist for employees
- Supporting pictures

